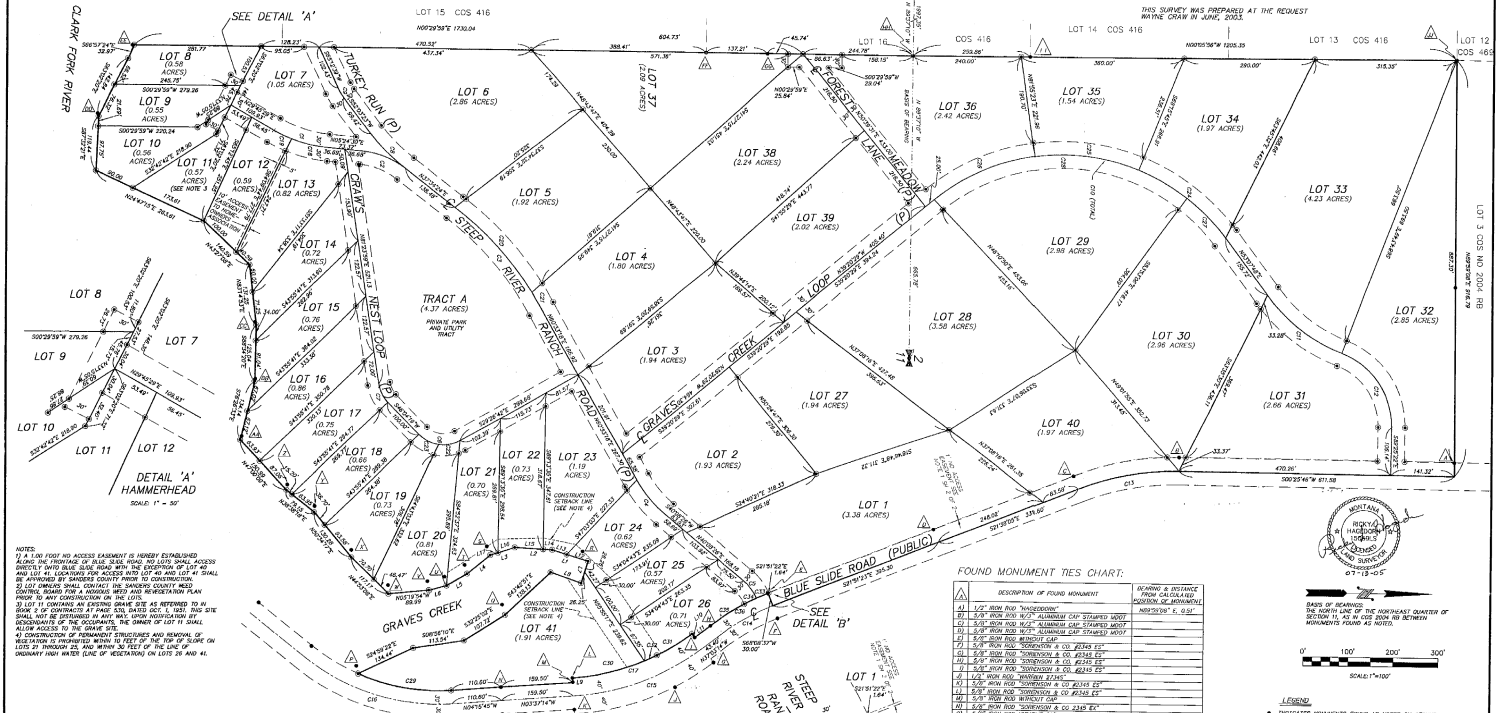


FINAL PLAT OF
"STEEP RIVER RANCH"
 A MAJOR SUBDIVISION IN THE NORTH HALF OF SECTION 11 AND
 THE SOUTH HALF OF SECTION 2, T.22N., R.30W., M.P.M.,
 SANDERS COUNTY, MONTANA

THIS SURVEY WAS PREPARED AT THE REQUEST
 OF WYATT GRAY IN JUNE, 2002.



NOTES:
 1) A 100 FOOT NO ACCESS EASEMENT IS HEREBY ESTABLISHED ALONG THE BOUNDARY OF LOTS 1, 2, 3, 4, 5, 6, 7, 8, 9, 10, 11, 12, 13, 14, 15, 16, 17, 18, 19, 20, 21, 22, 23, 24, 25, 26, 27, 28, 29, 30, 31, 32, 33, 34, 35, 36, 37, 38, 39, 40, AND 41. COMMENCING AT THE CORNER OF LOTS 1 AND 2 AND LOT 41. COMMENCING FROM ACCESS AND LOT 40 AND LOT 41 SHALL BE HEREBY ESTABLISHED FROM THE CORNER OF LOTS 1 AND 2 TO THE CORNER OF LOTS 1 AND 2. THE BOUNDARY OF LOTS 1 AND 2 SHALL BE HEREBY ESTABLISHED FROM THE CORNER OF LOTS 1 AND 2 TO THE CORNER OF LOTS 1 AND 2. THE BOUNDARY OF LOTS 1 AND 2 SHALL BE HEREBY ESTABLISHED FROM THE CORNER OF LOTS 1 AND 2 TO THE CORNER OF LOTS 1 AND 2.

LINE TABLE:

LINE	BEARING	DISTANCE
L1	S89°55'00"W	83.00
L2	S89°55'00"W	83.00
L3	S89°55'00"W	83.00
L4	S89°55'00"W	83.00
L5	S89°55'00"W	83.00
L6	S89°55'00"W	83.00
L7	S89°55'00"W	83.00
L8	S89°55'00"W	83.00
L9	S89°55'00"W	83.00
L10	S89°55'00"W	83.00
L11	S89°55'00"W	83.00
L12	S89°55'00"W	83.00
L13	S89°55'00"W	83.00
L14	S89°55'00"W	83.00
L15	S89°55'00"W	83.00
L16	S89°55'00"W	83.00
L17	S89°55'00"W	83.00
L18	S89°55'00"W	83.00
L19	S89°55'00"W	83.00
L20	S89°55'00"W	83.00
L21	S89°55'00"W	83.00
L22	S89°55'00"W	83.00
L23	S89°55'00"W	83.00
L24	S89°55'00"W	83.00
L25	S89°55'00"W	83.00
L26	S89°55'00"W	83.00
L27	S89°55'00"W	83.00
L28	S89°55'00"W	83.00
L29	S89°55'00"W	83.00
L30	S89°55'00"W	83.00
L31	S89°55'00"W	83.00
L32	S89°55'00"W	83.00
L33	S89°55'00"W	83.00
L34	S89°55'00"W	83.00
L35	S89°55'00"W	83.00
L36	S89°55'00"W	83.00
L37	S89°55'00"W	83.00
L38	S89°55'00"W	83.00
L39	S89°55'00"W	83.00
L40	S89°55'00"W	83.00
L41	S89°55'00"W	83.00

CURVE TABLE:

CURVE	BEARING	ANGLE	RADIUS	ARC LENGTH	CHORD BEARING	CHORD LENGTH
C1	S89°55'00"W	90.00	100.00	157.08	N11°32'54"E	100.00
C2	S89°55'00"W	90.00	100.00	157.08	N11°32'54"E	100.00
C3	S89°55'00"W	90.00	100.00	157.08	N11°32'54"E	100.00
C4	S89°55'00"W	90.00	100.00	157.08	N11°32'54"E	100.00
C5	S89°55'00"W	90.00	100.00	157.08	N11°32'54"E	100.00
C6	S89°55'00"W	90.00	100.00	157.08	N11°32'54"E	100.00
C7	S89°55'00"W	90.00	100.00	157.08	N11°32'54"E	100.00
C8	S89°55'00"W	90.00	100.00	157.08	N11°32'54"E	100.00
C9	S89°55'00"W	90.00	100.00	157.08	N11°32'54"E	100.00
C10	S89°55'00"W	90.00	100.00	157.08	N11°32'54"E	100.00
C11	S89°55'00"W	90.00	100.00	157.08	N11°32'54"E	100.00
C12	S89°55'00"W	90.00	100.00	157.08	N11°32'54"E	100.00
C13	S89°55'00"W	90.00	100.00	157.08	N11°32'54"E	100.00
C14	S89°55'00"W	90.00	100.00	157.08	N11°32'54"E	100.00
C15	S89°55'00"W	90.00	100.00	157.08	N11°32'54"E	100.00
C16	S89°55'00"W	90.00	100.00	157.08	N11°32'54"E	100.00
C17	S89°55'00"W	90.00	100.00	157.08	N11°32'54"E	100.00
C18	S89°55'00"W	90.00	100.00	157.08	N11°32'54"E	100.00
C19	S89°55'00"W	90.00	100.00	157.08	N11°32'54"E	100.00
C20	S89°55'00"W	90.00	100.00	157.08	N11°32'54"E	100.00
C21	S89°55'00"W	90.00	100.00	157.08	N11°32'54"E	100.00
C22	S89°55'00"W	90.00	100.00	157.08	N11°32'54"E	100.00
C23	S89°55'00"W	90.00	100.00	157.08	N11°32'54"E	100.00
C24	S89°55'00"W	90.00	100.00	157.08	N11°32'54"E	100.00
C25	S89°55'00"W	90.00	100.00	157.08	N11°32'54"E	100.00
C26	S89°55'00"W	90.00	100.00	157.08	N11°32'54"E	100.00
C27	S89°55'00"W	90.00	100.00	157.08	N11°32'54"E	100.00
C28	S89°55'00"W	90.00	100.00	157.08	N11°32'54"E	100.00
C29	S89°55'00"W	90.00	100.00	157.08	N11°32'54"E	100.00
C30	S89°55'00"W	90.00	100.00	157.08	N11°32'54"E	100.00
C31	S89°55'00"W	90.00	100.00	157.08	N11°32'54"E	100.00
C32	S89°55'00"W	90.00	100.00	157.08	N11°32'54"E	100.00
C33	S89°55'00"W	90.00	100.00	157.08	N11°32'54"E	100.00
C34	S89°55'00"W	90.00	100.00	157.08	N11°32'54"E	100.00
C35	S89°55'00"W	90.00	100.00	157.08	N11°32'54"E	100.00
C36	S89°55'00"W	90.00	100.00	157.08	N11°32'54"E	100.00
C37	S89°55'00"W	90.00	100.00	157.08	N11°32'54"E	100.00
C38	S89°55'00"W	90.00	100.00	157.08	N11°32'54"E	100.00
C39	S89°55'00"W	90.00	100.00	157.08	N11°32'54"E	100.00
C40	S89°55'00"W	90.00	100.00	157.08	N11°32'54"E	100.00
C41	S89°55'00"W	90.00	100.00	157.08	N11°32'54"E	100.00
C42	S89°55'00"W	90.00	100.00	157.08	N11°32'54"E	100.00
C43	S89°55'00"W	90.00	100.00	157.08	N11°32'54"E	100.00
C44	S89°55'00"W	90.00	100.00	157.08	N11°32'54"E	100.00
C45	S89°55'00"W	90.00	100.00	157.08	N11°32'54"E	100.00
C46	S89°55'00"W	90.00	100.00	157.08	N11°32'54"E	100.00
C47	S89°55'00"W	90.00	100.00	157.08	N11°32'54"E	100.00
C48	S89°55'00"W	90.00	100.00	157.08	N11°32'54"E	100.00
C49	S89°55'00"W	90.00	100.00	157.08	N11°32'54"E	100.00
C50	S89°55'00"W	90.00	100.00	157.08	N11°32'54"E	100.00

FOUND MONUMENT TIES CHART:

NO.	DESCRIPTION OF FOUND MONUMENT	BEARING & DISTANCE FROM CORNER OR POINT OF BEGINNING
1	1/2" IRON ROD W/ BRASS CAP	S89°55'00"W 83.00
2	1/2" IRON ROD W/ BRASS CAP	S89°55'00"W 83.00
3	1/2" IRON ROD W/ BRASS CAP	S89°55'00"W 83.00
4	1/2" IRON ROD W/ BRASS CAP	S89°55'00"W 83.00
5	1/2" IRON ROD W/ BRASS CAP	S89°55'00"W 83.00
6	1/2" IRON ROD W/ BRASS CAP	S89°55'00"W 83.00
7	1/2" IRON ROD W/ BRASS CAP	S89°55'00"W 83.00
8	1/2" IRON ROD W/ BRASS CAP	S89°55'00"W 83.00
9	1/2" IRON ROD W/ BRASS CAP	S89°55'00"W 83.00
10	1/2" IRON ROD W/ BRASS CAP	S89°55'00"W 83.00
11	1/2" IRON ROD W/ BRASS CAP	S89°55'00"W 83.00
12	1/2" IRON ROD W/ BRASS CAP	S89°55'00"W 83.00
13	1/2" IRON ROD W/ BRASS CAP	S89°55'00"W 83.00
14	1/2" IRON ROD W/ BRASS CAP	S89°55'00"W 83.00
15	1/2" IRON ROD W/ BRASS CAP	S89°55'00"W 83.00
16	1/2" IRON ROD W/ BRASS CAP	S89°55'00"W 83.00
17	1/2" IRON ROD W/ BRASS CAP	S89°55'00"W 83.00
18	1/2" IRON ROD W/ BRASS CAP	S89°55'00"W 83.00
19	1/2" IRON ROD W/ BRASS CAP	S89°55'00"W 83.00
20	1/2" IRON ROD W/ BRASS CAP	S89°55'00"W 83.00
21	1/2" IRON ROD W/ BRASS CAP	S89°55'00"W 83.00
22	1/2" IRON ROD W/ BRASS CAP	S89°55'00"W 83.00
23	1/2" IRON ROD W/ BRASS CAP	S89°55'00"W 83.00
24	1/2" IRON ROD W/ BRASS CAP	S89°55'00"W 83.00
25	1/2" IRON ROD W/ BRASS CAP	S89°55'00"W 83.00
26	1/2" IRON ROD W/ BRASS CAP	S89°55'00"W 83.00
27	1/2" IRON ROD W/ BRASS CAP	S89°55'00"W 83.00
28	1/2" IRON ROD W/ BRASS CAP	S89°55'00"W 83.00
29	1/2" IRON ROD W/ BRASS CAP	S89°55'00"W 83.00
30	1/2" IRON ROD W/ BRASS CAP	S89°55'00"W 83.00
31	1/2" IRON ROD W/ BRASS CAP	S89°55'00"W 83.00
32	1/2" IRON ROD W/ BRASS CAP	S89°55'00"W 83.00
33	1/2" IRON ROD W/ BRASS CAP	S89°55'00"W 83.00
34	1/2" IRON ROD W/ BRASS CAP	S89°55'00"W 83.00
35	1/2" IRON ROD W/ BRASS CAP	S89°55'00"W 83.00
36	1/2" IRON ROD W/ BRASS CAP	S89°55'00"W 83.00
37	1/2" IRON ROD W/ BRASS CAP	S89°55'00"W 83.00
38	1/2" IRON ROD W/ BRASS CAP	S89°55'00"W 83.00
39	1/2" IRON ROD W/ BRASS CAP	S89°55'00"W 83.00
40	1/2" IRON ROD W/ BRASS CAP	S89°55'00"W 83.00
41	1/2" IRON ROD W/ BRASS CAP	S89°55'00"W 83.00

HAGEDORN, INC.
 PROFESSIONAL LAND SURVEYORS
 P.O. BOX 2480, THOMPSON FALLS, MONTANA 59235
 PH: (406) 827-2400 FAX: 827-2401

SCALE: 1" = 100'
 DATE: 06-11-02
 DRAWN BY: RUS/PAH
 CHECKED BY: [Signature]
 SHEET 2 OF 2

CERTIFICATE OF DEDICATION -- FINAL PLAT

BE THE UNDERSIGNED PROPERTY OWNERS, DO HEREBY CERTIFY THAT WE HAVE CAUSED TO BE SURVEYED, SUBDIVIDED AND PLATED INTO LOTS AS SHOWN BY THE PLAT HERETO ATTACHED THE FOLLOWING DESCRIBED LAND IN SANDERS COUNTY TO WIT: THAT PORTION OF THE NORTH HALF OF SECTION 11 AND THE SOUTH HALF OF SECTION 2, TOWNSHIP 22 NORTH, RANGE 30 WEST, M.P.M., SANDERS COUNTY, MONTANA DESCRIBED AS FOLLOWS: BEGINNING AT THE QUARTER CORNER COMMON TO SAID SECTION 2 AND SAID SECTION 11; THENCE NORTH 89°37'10" WEST, ALONG THE NORTH LINE OF THE NORTHWEST QUARTER OF SAID SECTION 11 A DISTANCE OF 662.78 FEET TO A 1/2" IRON ROD WITH A PLASTIC CAP STAMPED "MCMILLEN 46595" AT THE ISSUE DATE OF BEGINNING;

FINAL PLAT OF "STEEP RIVER RANCH" A MAJOR SUBDIVISION IN THE NORTH HALF OF SECTION 11 AND THE SOUTH HALF OF SECTION 2, T.22N., R.30W., M.P.M., SANDERS COUNTY, MONTANA

THIS SURVEY WAS PREPARED AT THE REQUEST WACNE CHAM IN JUNE, 2005.

CONTAINING 70.10 ACRES TOGETHER WITH AND SUBJECT TO EASEMENTS AND RESTRICTIONS OF RECORD. THE ABOVE DESCRIBED TRACT OF LAND IS TO BE KNOWN AND DESIGNATED AS "STEEP RIVER RANCH" AND THE LANDS INCLUDED BY ALL PARTS SHOWN ON SAID PLAT ARE HEREBY GRANTED AND DONATED TO THE USE OF THE SANDERS COUNTY WATER ASSOCIATION FOR EVER.

CERTIFICATE OF COUNTY TREASURER

I, HENRY COUNTY TREASURER TO SECTION 11-411(2)(B) MORA, THAT NO REAL PROPERTY TAXES ASSESSED AND LEVIED ON THE LAND DESCRIBED BELOW AND DESIGNATED BY THE PROPOSED "STEEP RIVER RANCH" SUBDIVISION ARE DELINQUENT: DATED THIS 22nd DAY OF July, 2005

CERTIFICATE OF FINAL PLAT APPROVAL -- COUNTY

THE COUNTY COMMISSION OF SANDERS COUNTY, MONTANA DOES HEREBY CERTIFY THAT IT HAS EXAMINED THIS SUBDIVISION PLAT AND HAVING FOUND THE SAME TO CONFORM TO LAW APPROVES IT AND ACCEPTS THE DEDICATION TO PUBLIC USE OF ANY AND ALL LANDS SHOWN ON THIS PLAT AS BEING DEDICATED TO SUCH USE, THIS 22nd DAY OF July, 2005.

CERTIFICATE OF EXAMINING SURVEYOR -- FINAL PLAT

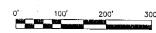
I, DONALD H. WILSON, ACTING AS EXAMINING LAND SURVEYOR FOR SANDERS COUNTY, MONTANA, DO HEREBY CERTIFY THAT I HAVE EXAMINED THE FINAL PLAT OF "STEEP RIVER RANCH" CONTAINING 70.10 ACRES OF SAID COUNTY, MONTANA, AND THAT THE SAME SET FORTH BY OR PURSUANT TO TITLE 76, PART 4-302, CHAPTER 1, M.C.A. IS CORRECT AND ACCURATE. DATED THIS 22nd DAY OF July, 2005

CERTIFICATE OF RECORDING BY CLERK AND RECORDER

STATE OF MONTANA) COUNTY OF SANDERS) FILED FOR RECORD THIS 22nd DAY OF July, 2005, AT 10:15 O'CLOCK A.M. BY (Donna Wilton) Deputy for Pat Ingraham, Clerk and Recorder. COVENANTS MISC #5528 DEQ MISC #5529 IMPROVEMENTS MISC #5530 WATER MISC #5531 EASEMENT MISC #5532 ABANDONMENT MISC #5532

CERTIFICATE OF SURVEYOR -- FINAL PLAT

I, DONALD H. WILSON, A REGISTERED LAND SURVEYOR DO HEREBY CERTIFY THAT I HAVE PERFORMED THE SURVEY SHOWN ON THE ATTACHED PLAT OF "STEEP RIVER RANCH" THAT SUCH SURVEY WAS MADE ON OR ABOUT 08-17-04, THAT SAID SURVEY IS TRUE AND CORRECT TO AS SHOWN AND THAT THE MONUMENTS FOUND AND SET ARE OF THE CHARACTER AND OCCUPY THE POSITIONS SHOWN THEREON. DATED THIS 22nd DAY OF July, 2005



HAGEDORN, INC. Professional Land Surveyors. P.O. BOX 2480, THOMPSON FALLS, MT. 59873. TEL: (406) 827-5400 FAX: 827-5401. SHEET 1 OF 2