

VICINITY MAP SOURCE: USGS SELDOVA (C-4) 1987  
SCALE: 1" = 1 MILE

**Certificate of Ownership and Dedication**  
We hereby certify that we are the owners of the real property shown and described hereon and that we hereby adopt the plan of subdivision and by our free consent dedicate the same to public use and grant all easements to the use shown.

*Jeri El-Mosry*  
Jeri El-Mosry  
As Successor Co-Trustee of the Alvin Toeschner Family Trust  
P.O. Box 56  
Soldotna, AK 99669-0056

*Alvin Toeschner*  
Alvin Toeschner  
As Successor Co-Trustee of the Alvin Toeschner Family Trust  
P.O. Box 56  
Soldotna, AK 99669-0056

*Alvin Toeschner*  
Alvin Toeschner  
Notary Public for Alaska  
My Commission Expires: 6-14-2006

*Alvin Toeschner*  
Alvin Toeschner  
Notary Public for Alaska  
My Commission Expires: 3-7-09

*Alvin Toeschner*  
Alvin Toeschner  
Notary Public for Alaska  
My Commission Expires: 3-7-09

*Alvin Toeschner*  
Alvin Toeschner  
Notary Public for Alaska  
My Commission Expires: 3-7-09

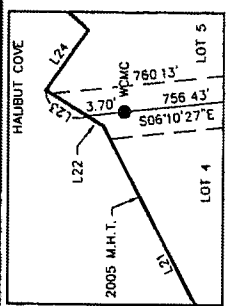
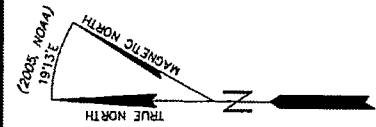
*Alvin Toeschner*  
Alvin Toeschner  
Notary Public for Alaska  
My Commission Expires: 3-7-09

**BROKEN AXLE SUBDIVISION**  
A subdivision of U.S. Survey No. 3366  
Located within the NW/4 Section 7, T7S, R11W,  
Seward Meridian, Homer Recording District,  
Third Judicial District, Alaska,  
Containing 56.445 Acres,  
Containing Lots 1-5

SURVEYOR: MULLIKIN SURVEYS [DRAWN BY: GDS FB]  
C.O. BOX 790  
HOMER, AK 99603 [DATE: 5-25-06] 248

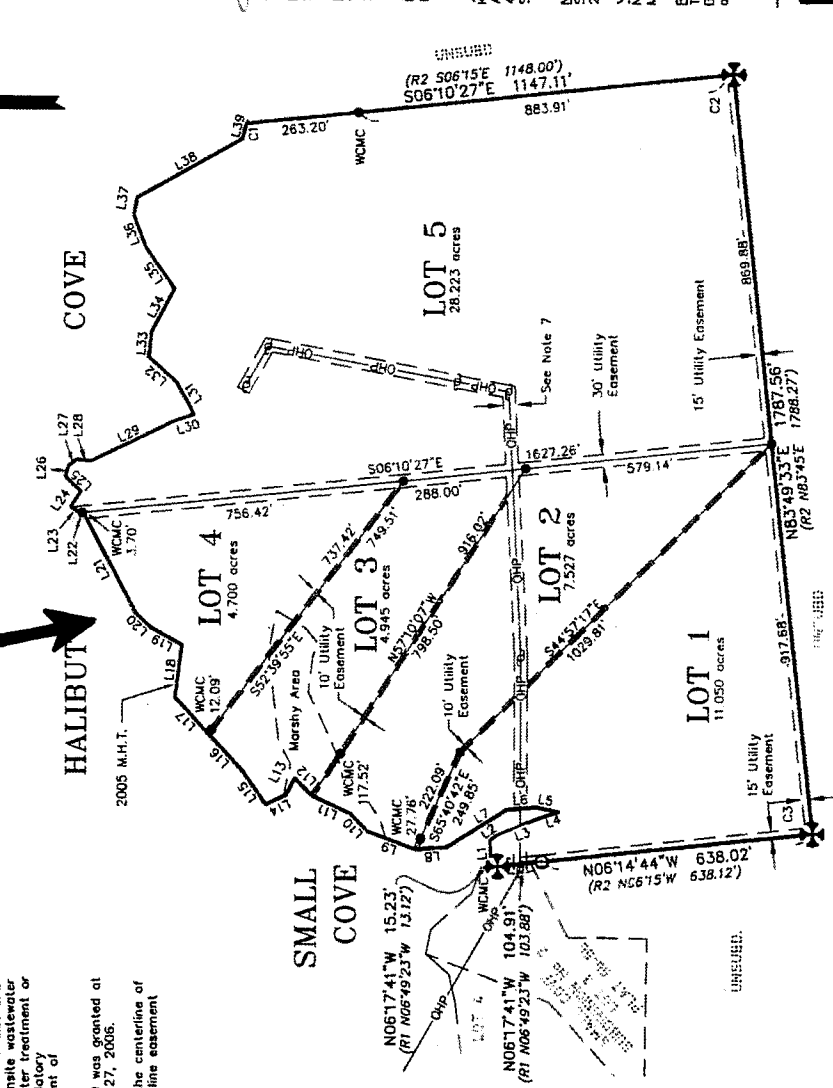
OWNERS: K.P.B. BOYD, KARY  
K.P.B. BOYD, KARY  
SOLDOTNA, AK 99669  
SOLDOTNA, AK 99669

SCALE: 1" = 200' DEM CHECKED: Dwg Number: KPB File 2006-030  
3-7-09

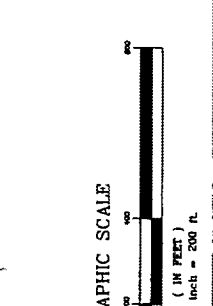
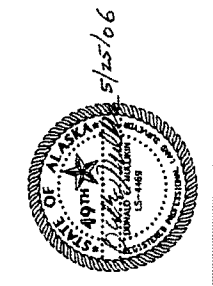


Detail 1  
NOT TO SCALE

- LEGEND:**
- Found 3 1/4" BLM Brass Cap, 1979
  - Found 3 1/4" Aluminum Cap, 1979, 810-S
  - Set 2" Aluminum cap on 30" rebar
  - Record data per Small Cove Subd. #2, Plat No. 96-56, H.R.D.
  - Record data per U.S. Survey No. 3366
  - Overhead Powerline
  - Mean High Tide
  - Power Pole
  - Witness Corner to Mean High Tide
  - Witness Corner to Mean High Tide
  - WCMC



2006-24-20  
HERRI  
1:16  
5/25/06



- NOTES:**
1. The purpose of this plat is to subdivide U.S. Survey No. 3366 into 5 lots.
  2. **BASES OF BEARING:** The bases of bearing was determined by global positioning system using high precision methods and using Trimble Data Station GPS Survey Pro version 3.2 software with Javad Legacy and Legacy-E receivers. A local grid was established oriented to true geodetic north at lot: 59°35'26.57"N and Long: 151°13'56.37"W, NAD 83.
  3. No permanent structure shall be constructed or placed within the utility easement which would interfere with the ability of the utility to use the easement.
  4. **WASTEWATER DISPOSAL:** These lots are at least 200,000 square feet or nominal 5 acres in size and conditions may not be suitable for onsite wastewater treatment and disposal. Any wastewater treatment or disposal system must meet the regulatory requirements of the Alaska Department of Environmental Conservation.
  5. An exception to K.P.B. 20.210.200 was granted at the Plat Committee meeting of Feb. 27, 2006.
  6. Existing Overhead Power Line is the centerline of a 30 foot wide electrical distribution line easement including guys and anchors.

MULLIKIN SURVEYS  
P.O. BOX 790  
HOMER, ALASKA 99603  
(907) 285-8875

LINE	2005 M.H.T. LENGTH	BEARING
L1	62.33	N86°57'10"E
L2	21.64	S37°35'38"E
L3	102.28	S21°26'18"E
L4	53.22	S18°08'18"E
L5	53.72	N10°45'37"E
L6	71.42	N02°04'38"W
L7	164.85	N32°14'00"W
L8	73.31	S05°17'45"E
L9	120.28	S20°00'04"W
L10	57.67	S45°46'01"W
L11	96.56	N25°01'13"E
L12	57.74	N44°51'35"E
L13	42.71	N62°50'39"W
L14	53.65	N26°19'30"W
L15	96.92	N54°13'22"E
L16	116.26	N47°08'26"E
L17	116.26	S47°08'26"W
L18	123.53	N82°26'28"W
L19	66.60	S28°45'43"W
L20	46.72	S44°08'55"W
L21	255.29	S62°13'57"W
L22	11.41	S31°26'32"E
L23	28.16	N31°26'32"E
L24	43.18	S55°20'02"E
L25	51.34	N42°41'51"E
L26	26.36	S72°33'54"E
L27	24.55	S37°03'17"E
L28	32.97	S05°52'39"W
L29	217.07	S26°08'08"E
L30	49.34	S18°12'46"E
L31	82.64	N82°05'37"E
L32	91.82	N41°55'27"E
L33	59.39	S63°33'55"E
L34	114.68	S62°22'57"E
L35	117.80	N54°43'55"E
L36	82.40	N80°16'38"E
L37	40.79	S79°04'19"E
L38	263.99	S29°36'55"E
L39	36.97	S75°58'53"E